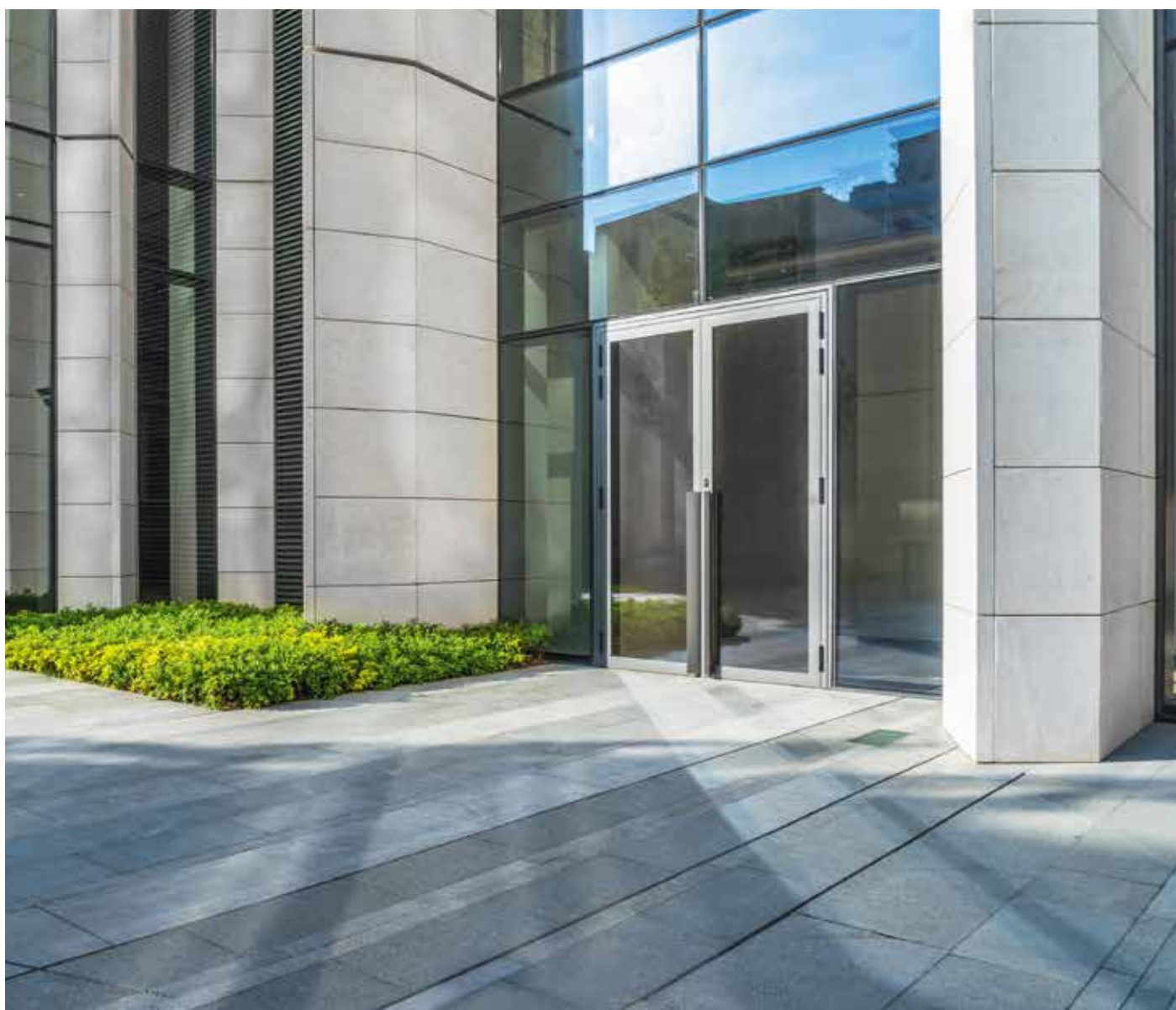


# Lead covers for modern door systems



The right version for every application

 **effeff**  
ASSA ABLOY

Experience a safer  
and more open world



## About us.

Whatever you want to secure, protect, maintain –  
we have technology you require.



## ASSA ABLOY Sicherheitstechnik GmbH



Elbphilharmonie Hamburg



HafenCity University Hamburg



Bauhaus Dessau



Stuttgart City Library

Breaking new grounds, implementing new technologies, developing new ideas.

Founded in 1936, the company effeff based in Albstadt became the market leader in the field of door control systems by following a consistent strategy.

After starting the electric strike production in 1947, a comprehensive product range has been gradually developed, which enables effeff to offer suitable solutions for every door.

February 1st, 2000, effeff joined the ASSA ALBOY Group based in Stockholm, Sweden and merged at the beginning of 2005 with IKON GmbH Präzisionstechnik, Berlin who also belong to the group to become ASSA ABLOY Sicherheitstechnik GmbH.

IKON and effeff, both renowned and well-established brands within the market remain under ASSA ABLOY Sicherheitstechnik GmbH as do the production sites of Berlin and Albstadt and a sales office in Ratingen.

ASSA ABLOY is the leading manufacturer and supplier of mechanical and electromechanical locks and related products worldwide. Our customers benefit from the extensive know-how of the largest international group of companies, meeting every requirement in terms of total security and comfort throughout the world.



# Lead covers from effeff

## All selection options at a glance

### Width

effeff lead covers with one-sided and two-sided installation casing are 24 mm wide and therefore fit in almost all profiles:

- Simplified installation
- Less milling work

### Flex cable

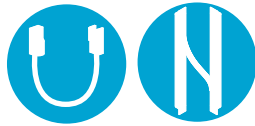
The flexible and spiral cable prevents cable breakage and achieves 1 million cycles in an internal test.

- No cable breakage

### Mounting type

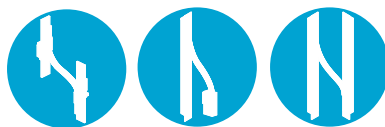
Depending on the requirements for the door or on the construction site, you can choose between surface or flush mounting:

- Surface mounting
- Flush mounting



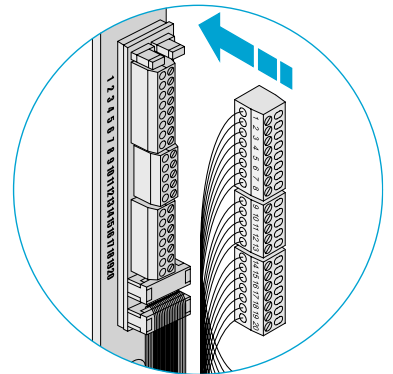
### Installation casings

The lead covers are available without installation casing, with installation casing on one side or with casings on both sides.



### Number of poles

The more complex the technology on the door, the more poles are required to connect the electrical devices. Here, our lead covers convince with either 10 or 20 poles.



### Terminal plug connection

The terminal plug connection enables:

- Separate production of door and frame
- Quick installation on the construction site
- Simple connection to the building installation
- Easy separation of service and maintenance work

### Length

The choice of the length depends on how far the door needs to be opened. There are:

- Long version with max. rotation 200 mm
- Short version with max. rotation 100 mm

### Mounting plates

- Mounting plate with radius
- Round end caps

For further information can  
be found online at :

[www.assaabloyopeningsolutions.de/lead-cover](http://www.assaabloyopeningsolutions.de/lead-cover)



# Lead covers

## for open installation without installation casing



### Lead cover for open installation

For direct power transmission from the door frame to the door leaf. Rust-resistant, flexible metal hose. Fixing caps for mounting on door frame and door leaf.

Article / Feature	Order no.
For surface installation; nickel-coated brass; length 18 cm	1 0 3 1 8 - - - - - 0 0
For open installation; nickel-coated brass; length 30 cm	1 0 3 1 8 - 3 0 - - - - 0 0
For open mounting; nickel-plated brass; length 40 cm	1 0 3 1 8 - 4 0 - - - - 0 0
For open installation; nickel-coated brass; length 60 cm	1 0 3 1 8 - 6 0 - - - - 0 0
For open installation; nickel-coated brass; length 80 cm	1 0 3 1 8 - 8 0 - - - - 0 0
Nickel-coated brass; Length 10 m	1 0 3 1 8 - 1 - 1 0 - - - 0 0
Nickel-coated brass; Length 100 m	1 0 3 1 8 - 1 - 1 0 0 - - 0 0
For metal hose; nickel-plated brass; white	1 0 3 1 8 - 2 - - - - - 0 0
For flexible metal tube; nickel-coated brass	1 0 3 1 8 - 3 - - - - - 0 0
For open installation; white plastic-coated; Length 30 cm	1 0 3 1 8 W - - - - - 0 0
For open installation; white plastic-coated; Length 30 cm	1 0 3 1 8 W - 1 - 1 0 - - 0 0



### Lead cover 10312-11

Lead cover for open installation or for concealed installation in door rebate with room dimension >16 mm.

Suitable for aluminium and synthetic profiles without installation casing.

Technical attributes	
Chamber dimension	> 16 mm
Material spiral hose	Stainless steel
Max. cable diameter	7 mm
Max. permissible horizontal rotation	100 mm
Length	288 mm
Width	16 mm
Depth	16 mm

Article / Feature	Order no.
Cable guide, concealed, short, without installation casing	1 0 3 1 2 - 1 1 - - - - 0 0



### Lead cover 10312-21

Lead cover for open installation or for concealed installation in door rebate with room dimension >16 mm.

Suitable for aluminium and synthetic profiles without installation casing.

Technical attributes	
Chamber dimension	> 16 mm
Material spiral hose	Stainless steel
Max. cable diameter	7 mm
Max. permissible horizontal rotation	200 mm
Length	443 mm
Width	16 mm
Depth	16 mm

Article / Feature	Order no.
Cable guide, concealed, long, without installation casing	1 0 3 1 2 - 2 1 - - - - 0 0

# Lead covers for concealed installation



## Concealed lead cover 10312-14

24 mm width installation casing.

Lead cover for concealed installation.

Suitable for feeding cables with installation housing on one side for wood, metal and synthetic profiles.

The 10313-24 accessory set with 2 curved end pieces lends itself as an accessory for the installation casing in wooden profiles

Technical attributes	
Length	330 mm
Width	24 mm
Depth	17 mm
Version	Cable guide
Variant	Installation casing on one side
Material installation casing	Stainless steel
Material spiral hose	Stainless steel
Max. cable diameter	7 mm
Max. permissible horizontal rotation	100 mm

Article / Feature	Order no.
Cable guide, concealed, short, installation casing on one side	1 0 3 1 2 - 1 4 - - - - 0 0



## Lead cover 10312-14-10

24 mm width installation casing.

Lead cover for concealed installation.

For feeding cable with installation casing on both sides.

Installation system for minimal room dimensions and unobstructed movement. This system is particularly suitable for door systems with reduced spacing for hinges and inside hinges.

The advantage of this installation type is being able to position the door nearly flush with the frame (<1 mm reveal when door is closed). Minimal gaps for door rotation, as with inside hinges, for instance, do not result in the door jamming.

Technical attributes	
Variant	Installation casing on both sides
Version	Cable guide
Material installation casing	Stainless steel
Material spiral hose	Stainless steel
Max. cable diameter	7 mm
Max. permissible horizontal rotation	100 mm
Length	330 mm
Width	24 mm
Depth	17 mm

Article / Feature	Order no.
Cable guide, concealed, short, installation casing on both sides	1 0 3 1 2 - 1 4 - 1 0 - - - 0 0



## Concealed cable Transition 10312-20

Lead cover for concealed installation.

Suitable for feeding cables with installation housing on one side for wood, metal and synthetic profiles.

With mounting house for cable lock

The 10313-24 accessory set with 2 curved end pieces lends itself as an accessory for the installation casing in wooden profiles

Technical attributes	
Version	Cable guide
Variant	Installation casing on one side
Material installation casing	Stainless steel
Material spiral hose	Stainless steel
Max. cable diameter	7 mm
Max. permissible horizontal rotation	200 mm
Length installation casing / cable housing	519 mm / 110 mm
Width installation casing / cable housing	24 mm / 16 mm
Depth installation casing / cable housing	17,5 mm / 32 mm

Article / Feature	Order no.
Cable guide, concealed, long, installation casing on one side	1 0 3 1 2 - 2 0 - - - - 0 0

# Lead covers for concealed installation



**Concealed lead cover model 10312-20-20**

Lead cover for concealed installation.  
For feeding cable with integrated cable tracking and installation casing on both sides. Installation system for minimal room dimensions and unobstructed movement. This system is particularly suitable for door systems with reduced spacing for hinges and inside hinges.  
The advantage of this installation type is being able to position the door practically flush with the frame (<1mm reveal when door is closed). Minimal gaps for door rotation, as with inside hinges, for instance, do not result in the door jamming.

Technical attributes	
Version	Cable guide
Variant	Installation casing on both sides
Material installation casing	Stainless steel
Material spiral hose	Stainless steel
Max. cable diameter	7 mm
Max. permissible horizontal rotation	200 mm
Length installation casing / cable housing	519 mm / 110 mm
Width installation casing / cable housing	24 mm / 16 mm
Depth installation casing / cable housing	18 mm / 32 mm
Article / Feature	
Cable guide, concealed, long, installation casing on both sides	1 0 3 1 2 - 2 0 - 2 0 - - 0 0

## Lead covers

### for concealed installation, terminal/plug-in 10-pin



#### 10-pin plug-in lead cover 10314-20-20

Lead cover for concealed installation.

With integrated break-proof flex cable, clamp-plug connection technology and installation housing on both sides.

Installation system for minimal room dimensions and unobstructed movement. This system is particularly suitable for door systems with reduced spacing for hinges and inside hinges.

The advantage of this installation type is being able to position the door nearly flush with the frame (<1 mm reveal when door is closed). Minimal gaps for door rotation, as with inside hinges, for instance, do not result in the door jamming.

Technical attributes	
Input operating voltage	24 V +20%
Contact resistance per signal	0.35 Ohm
Max. current consumption	1 A 100% ED, 4 A max. 1 sec. 10% ED
Variant	Installation casing on both sides
Version	Plug-in device
Material installation casing	Stainless steel
Material spiral hose	Stainless steel
Max. permissible horizontal rotation	200 mm
Length	519 mm
Width	24 mm
Depth	33 mm
Cycles at 180 turns	1.000 000
Signal transmission	10-pin

Article / Feature	Order no.
Terminal/plug-in 10-pin, concealed, long, installation casing on both sides	1 0 3 1 4 - 2 0 - 2 0 - - 0 0

# Lead covers

## for concealed installation, terminal/plug-in 10-pin



### Lead cover 10314-11

For direct power transmission from the door frame to the door leaf. Rust-resistant, flexible metal hose. Fixing caps for mounting on door frame and door leaf.

Technical attributes	
Input operating voltage	24 V +20%
Contact resistance per signal	0.21 Ohm
Max. current consumption	1 A 100% ED, 4 A max. 1 sec. 10% ED
Max. permissible horizontal rotation	100 mm
Area of application	Aluminium and plastic profiles
Version	Plug-in device
Variant	Without installation casing
Chamber dimension	> 16 mm
Material mounting plate / installation casing	Stainless steel
Material spiral hose	Stainless steel
Length mounting plate	200 mm
Width mounting plate	24 mm
Depth mounting plate	19 mm
Installation length	340 mm
Cycles at 180 turns	1.000 000
Signal transmission	10-pin

Article / Feature	Order no.
Terminal/plug-in 10-pin, concealed, short, without installation casing	1 0 3 1 4 - 1 1 - - - - 0 0



### Lead cover 10314-21

For direct power transmission from the door frame to the door leaf. Rust-resistant, flexible metal hose. Fixing caps for mounting on door frame and door leaf.

Technical attributes	
Input operating voltage	24 V +20%
Contact resistance per signal	0.35 Ohm
Max. current consumption	1 A 100% ED, 4 A max. 1 sec. 10% ED
Max. permissible horizontal rotation	200 mm
Area of application	Aluminium and plastic profiles
Version	Plug-in device
Variant	Without installation casing
Chamber dimension	> 16 mm
Material mounting plate / installation casing	Stainless steel
Material spiral hose	Stainless steel
Length mounting plate	200 mm
Width mounting plate	24 mm
Depth mounting plate	19 mm
Installation length	490 mm
Cycles at 180 turns	1.000 000
Signal transmission	10-pin

Article / Feature	Order no.
Terminal/plug-in 10-pin, concealed, long, without installation casing	1 0 3 1 4 - 2 1 - - - - 0 0

## Lead covers

### for concealed installation, terminal/plug-in 10-pin



#### Lead cover 10314-14

For direct power transmission from the door frame to the door leaf. Rust-resistant, flexible metal hose. Fixing caps for mounting on door frame and door leaf.

Technical attributes	
Input operating voltage	24 V +20%
Contact resistance per signal	0.21 Ohm
Max. current consumption	1 A 100% ED, 4 A max. 1 sec. 10% ED
Max. permissible horizontal rotation	100 mm
Chamber dimension	> 16 mm
Installation length	340 mm
Version	Plug-in device
Variant	Installation casing on one side/angular mounting plate
Material mounting plate / installation casing	Stainless steel
Material spiral hose	Stainless steel
Length installation casing / mounting plate	330 mm / 200 mm
Width installation casing / mounting plate	24 mm / 24 mm
Depth installation casing / mounting plate	33 mm / 19 mm
Cycles at 180 turns	1.000 000
Signal transmission	10-pin

Article / Feature	Order no.
Terminal/plug-in 10-pin, concealed, short, installation casing on one side	1 0 3 1 4 - 1 4 - - - - 0 0



#### Lead cover 10314-20

Lead cover for concealed installation.  
With integrated flexible cable to prevent cable breakage  
Clamp/plug connector technology, 10-pin  
One-sided installation casing suitable for wood, metal and plastic profiles  
The 10313-24 accessory set with 2 curved end pieces lends itself as an accessory for the switch box in wooden profiles

Technical attributes	
Input operating voltage	24 V +20%
Contact resistance per signal	0.35 Ohm
Max. current consumption	1 A 100% ED, 4 A max. 1 sec. 10% ED
Cycles at 180 turns	1.000 000
Max. permissible horizontal rotation	200 mm
Version	Plug-in device
Variant	Installation casing on one side/angular mounting plate
Material mounting plate / installation casing	Stainless steel
Material spiral hose	Stainless steel
Length installation casing / mounting plate	519 mm / 200 mm
Width installation casing / mounting plate	24 mm / 24 mm
Depth installation casing / mounting plate	33 mm / 19 mm
Signal transmission	10-pin

Article / Feature	Order no.
Terminal/plug-in 10-pin, concealed, long, installation casing on one side	1 0 3 1 4 - 2 0 - - - - 0 0

# Lead covers

## for concealed installation, terminal/plug-in 10-pin



### Lead cover 10314-14-10

24 mm width installation casing.

Lead cover for concealed installation.

With integrated break-proof flex cable, 10-pin clamp-plug connection technology and installation casing on both sides.

Installation system for minimal room dimensions and unobstructed movement. This system is particularly suitable for door systems with reduced spacing for hinges and inside hinges.

The advantage of this installation type is being able to position the door nearly flush with the frame (<1 mm reveal when door is closed). Minimal gaps for door rotation, as with inside hinges, for instance, do not result in the door jamming.

Technical attributes	
Input operating voltage	24 V +20%
Contact resistance per signal	0.21 Ohm
Max. current consumption	1 A 100% ED, 4 A max. 1 sec. 10% ED
Version	Plug-in device
Variant	Installation casing on both sides
Material installation casing	Stainless steel
Material spiral hose	Stainless steel
Max. permissible horizontal rotation	100 mm
Length	330 mm
Width	24 mm
Depth	33 mm
Cycles at 180 turns	1.000 000
Application	Installation system for small chamber dimensions and collision-free movement
Signal transmission	10-pin

Article / Feature	Order no.
Terminal/plug-in 10-pin, concealed, short, installation casing on both sides	1 0 3 1 4 - 1 4 - 1 0 - - 0 0



### 10-pin plug-in lead cover 10314-20-20

Lead cover for concealed installation.

With integrated break-proof flex cable, clamp-plug connection technology and installation housing on both sides.

Installation system for minimal room dimensions and unobstructed movement. This system is particularly suitable for door systems with reduced spacing for hinges and inside hinges.

The advantage of this installation type is being able to position the door nearly flush with the frame (<1 mm reveal when door is closed). Minimal gaps for door rotation, as with inside hinges, for instance, do not result in the door jamming.

Technical attributes	
Input operating voltage	24 V +20%
Contact resistance per signal	0.35 Ohm
Max. current consumption	1 A 100% ED, 4 A max. 1 sec. 10% ED
Variant	Installation casing on both sides
Version	Plug-in device
Material installation casing	Stainless steel
Material spiral hose	Stainless steel
Max. permissible horizontal rotation	200 mm
Length	519 mm
Width	24 mm
Depth	33 mm
Cycles at 180 turns	1.000 000
Application	Installation system for small chamber dimensions and collision-free movement
Signal transmission	10-pin

Article / Feature	Order no.
Terminal/plug-in 10-pin, concealed, long, installation casing on both sides	1 0 3 1 4 - 2 0 - 2 0 - - 0 0

# Lead covers

## for concealed installation, terminal/plug-in 20-pin



### Lead cover 10314-34

20-pin lead cover for power transmission between frame and leaf.

Technical attributes	
Input operating voltage	24 V +20%
Max. current consumption jumper 1+2 connected	2 A 100% ED, 5 A max. 1 sec. 10% ED
Max. current consumption	1 A 100% ED, 4 A max. 1 sec. 10% ED
Contact resistance per signal	0.21 Ohm
Connecting cable	Plug-in device
Signal transmission	20-pin
Variant	Installation casing on one side/angular mounting plate
Material mounting plate / installation casing	Stainless steel
Material spiral hose	Stainless steel
Max. permissible horizontal rotation	100 mm
Cycles at 180 turns	1.000 000
Length installation casing / mounting plate	330 mm / 200 mm
Width installation casing / mounting plate	24 mm / 24 mm
Depth installation casing / mounting plate	33 mm / 19 mm

Article / Feature	Order no.
Terminal/plug-in 20-pin, concealed, short, installation casing on one side	1 0 3 1 4 - 3 4 - - - - 0 0



### Lead cover 10314-40

20-pin lead cover for power transmission between frame and leaf.

Technical attributes	
Input operating voltage	24 V +20%
Max. current consumption jumper 1+2 connected	2 A 100% ED, 5 A max. 1 sec. 10% ED
Max. current consumption	1 A 100% ED, 4 A max. 1 sec. 10% ED
Contact resistance per signal	0.35 Ohm
Connecting cable	Plug-in device
Signal transmission	20-pin
Variant	Installation casing on one side/angular mounting plate
Material mounting plate / installation casing	Stainless steel
Material spiral hose	Stainless steel
Max. permissible horizontal rotation	200 mm
Cycles at 180 turns	1.000 000
Length installation casing / mounting plate	519 mm / 200 mm
Width installation casing / mounting plate	24 mm / 24 mm
Depth installation casing / mounting plate	33 mm / 19 mm

Article / Feature	Order no.
Terminal/plug-in 20-pin, concealed, long, installation casing on one side	1 0 3 1 4 - 4 0 - - - - 0 0

## Lead covers

### for concealed installation, terminal/plug-in 20-pin



#### Lead cover 10314R34

20-pin lead cover for power transmission between frame and leaf.

Technical attributes	
Input operating voltage	24 V +20%
Max. current consumption jumper 1+2 connected	2 A 100% ED, 5 A max. 1 sec. 10% ED
Max. current consumption	1 A 100% ED, 4 A max. 1 sec. 10% ED
Contact resistance per signal	0.21 Ohm
Connecting cable	Plug-in device
Signal transmission	20-pin
Variant	Installation casing on one side/curved end mounting plate
Material mounting plate / installation casing	Stainless steel
Material spiral hose	Stainless steel
Max. permissible horizontal rotation	100 mm
Cycles at 180 turns	1.000 000
Length installation casing / mounting plate	330 mm / 228 mm
Width installation casing / mounting plate	24 mm / 24 mm
Depth installation casing / mounting plate	33 mm / 19 mm

Article / Feature	Order no.
Terminal/plug-in 20-pin, concealed, short, installation casing on one side with radius mounting plate	1 0 3 1 4 R 3 4 - - - - 0 0



#### Lead cover 10314R40

Lead cover for concealed installation.  
With integrated flexible cable to prevent cable breakage.  
Clamp/plug connector technology, 20-pin.  
With 2 jumpers to the bridge of PIN 1+2 as well as 3+4 for increase of power load.  
One-sided installation casing and curved end mounting plate suitable for wooden profiles.  
The 10313-24 accessory set with 2 curved end pieces lends itself as an accessory for the installation casing in wooden profiles.

Technical attributes	
Input operating voltage	24 V +20%
Max. current consumption jumper 1+2 connected	2 A 100% ED, 5 A max. 1 sec. 10% ED
Max. current consumption	1 A 100% ED, 4 A max. 1 sec. 10% ED
Contact resistance per signal	0.35 Ohm
Connecting cable	Plug-in device
Signal transmission	20-pin
Variant	Installation casing on one side/curved end mounting plate
Material mounting plate / installation casing	Stainless steel
Material spiral hose	Stainless steel
Max. permissible horizontal rotation	200 mm
Length installation casing / mounting plate	519 mm / 228 mm
Width installation casing / mounting plate	24 mm / 24 mm
Depth installation casing / mounting plate	33 mm / 19 mm
Cycles at 180 turns	1.000 000

Article / Feature	Order no.
Terminal/plug-in 20-pin, concealed, long, installation casing on one side with radius mounting plate	1 0 3 1 4 R 4 0 - - - - 0 0

## Lead covers

### for concealed installation, terminal/plug-in 20-pin



#### Lead cover 10314-34-10

20-pin lead cover for power transmission between frame and leaf

Technical attributes	
Input operating voltage	24 V +20%
Max. current consumption jumper 1+2 connected	2 A 100% ED, 5 A max. 1 sec. 10% ED
Max. current consumption	1 A 100% ED, 4 A max. 1 sec. 10% ED
Contact resistance per signal	0.21 Ohm
Connecting cable	Plug-in device
Signal transmission	20-pin
Variant	Installation casing on both sides
Material installation casing	Stainless steel
Material spiral hose	Stainless steel
Max. permissible horizontal rotation	100 mm
Cycles at 180 turns	1.000 000
Length	330 mm
Width	24 mm
Depth	33 mm

Article / Feature	Order no.
Terminal/plug-in 20-pin, concealed, short, installation casing on both sides	1 0 3 1 4 - 3 4 - 1 0 - - 0 0



#### Lead cover 10314-40-20

20-pin lead cover for power transmission between frame and leaf

Technical attributes	
Input operating voltage	24 V +20%
Max. current consumption jumper 1+2 connected	2 A 100% ED, 5 A max. 1 sec. 10% ED
Max. current consumption	1 A 100% ED, 4 A max. 1 sec. 10% ED
Contact resistance per signal	0.35 Ohm
Connecting cable	Plug-in device
Signal transmission	20-pin
Variant	Installation casing on both sides
Material installation casing	Stainless steel
Material spiral hose	Stainless steel
Max. permissible horizontal rotation	200 mm
Cycles at 180 turns	1.000 000
Length	519 mm
Width	24 mm
Depth	33 mm

Article / Feature	Order no.
Terminal/plug-in 20-pin, concealed, long, installation casing on both sides	1 0 3 1 4 - 4 0 - 2 0 - - 0 0

# Lead covers

## for concealed installation, terminal/plug-in 20-pin



**Lead cover 10314-31**  
20-pin lead cover for power transmission between frame and leaf

Technical attributes	
Input operating voltage	24 V +20%
Max. current consumption jumper 1+2 connected	2 A 100% ED, 5 A max. 1 sec. 10% ED
Max. current consumption	1 A 100% ED, 4 A max. 1 sec. 10% ED
Contact resistance per signal	0.21 Ohm
Connecting cable	Plug-in device
Signal transmission	20-pin
Variant	Without installation casing
Chamber dimension	> 16 mm
Material mounting plate / installation casing	Stainless steel
Material spiral hose	Stainless steel
Max. permissible horizontal rotation	100 mm
Cycles at 180 turns	1.000 000
Length mounting plate	200 mm
Width mounting plate	24 mm
Depth mounting plate	19 mm
Installation length	340 mm

Article / Feature	Order no.
Terminal/plug-in 20-pin, concealed, short, without installation casing	1 0 3 1 4 - 3 1 - - - - 0 0



**Lead cover 10314-41**  
20-pin lead cover for power transmission between frame and leaf

Technical attributes	
Input operating voltage	24 V +20%
Max. current consumption jumper 1+2 connected	2 A 100% ED, 5 A max. 1 sec. 10% ED
Max. current consumption	1 A 100% ED, 4 A max. 1 sec. 10% ED
Contact resistance per signal	0.35 Ohm
Connecting cable	Plug-in device
Signal transmission	20-pin
Variant	Without installation casing
Chamber dimension	> 16 mm
Material mounting plate / installation casing	Stainless steel
Material spiral hose	Stainless steel
Max. permissible horizontal rotation	200 mm
Cycles at 180 turns	1.000 000
Length mounting plate	200 mm
Width mounting plate	24 mm
Depth mounting plate	19 mm
Installation length	490 mm

Article / Feature	Order no.
Terminal/plug-in 20-pin, concealed, long, without installation casing	1 0 3 1 4 - 4 1 - - - - 0 0

# Lead covers

## with integrated IO-module



### OneSystem IO module N5952

The OneSystem IO module is suitable for digital connection of OneSystem locks with Hi-O technology. The OneSystem IO module provides the connection to conventional devices, e.g. access control, on-site interlock controls or monitoring controls. To this end, it provides non-isolated inputs for external control and potential-free relay outputs for querying the function states of the locks for higher-level systems. Three inputs for external release, external monitoring contact and external voltage-based release. Two freely configurable outputs (can be assigned with the same function).

#### Technical attributes

Input operating voltage	24V +20%
Max. current consumption	1 A 100% ED, 4 A max. 1 sec. 10% ED
Contact resistance per signal	0.21 Ohm
Signal transmission	5-pin
Length installation casing / mounting plate	330 mm/200 mm; 519 mm/250 mm
Width installation casing / mounting plate	24 mm/24 mm
Depth installation casing / mounting plate	17 mm, 3 mm
Material spiral hose	Stainless steel
Cycles at 180 turns	1.000 000

#### Article / Feature

#### Order no.

Lead cover concealed, installation casing on one side, length 330mm, IO module on the mounting plate	<b>N 5 9 5 2 0 0 1 4 0 0 0 S 0 0</b>
Lead cover concealed, installation casing on one side, length 330mm, IO module in the box	<b>N 5 9 5 2 0 0 1 4 0 0 0 W 0 0</b>
Lead cover concealed, installation casing on one side, length 519mm, IO module on the mounting plate	<b>N 5 9 5 2 0 0 2 0 0 0 0 S 0 0</b>
Lead cover concealed, installation casing on one side, length 519mm, IO module in the box	<b>N 5 9 5 2 0 0 2 0 0 0 0 W 0 0</b>

# Lead covers

## Accessories



### Mounting set model 10313

This saves time when installing the protected cable transition with installation housing 25 mm (short version, e. g. model 10312-10/10314-10) in wood structures. It consists of two radius end pieces and 5 stainless steel screws to fasten the installation housing and the plate on the opposite side. When using the 10313 installation set, only a cutout is required, with no finishing work. There is no longer the need to chisel out to fit the installation housing and the square fastening plate.

Technical attributes	
Length	27,5 mm
Width	24 mm
Depth	18 mm

Article / Feature	Order no.
Timber construction mounting set for lead covers with installation casing	1 0 3 1 3 - 2 4 - - - - 0 0



### Adapter plate set for wood structure Z09-ADL54

For the time-saving installation of the concealed lead cover series 10314... with rectangular screw-on plate (for variants with installation casing on one side) in wood structures. When using the adapter plate set for wooden doors only a cutout is required with no finishing work. There is no longer the need to chisel out to fit the rectangular screw-on plate.

Technical attributes	
Height	48 mm
Width	24 mm
Depth	6 mm

Article / Feature	Order no.
Set for wooden doors	Z 0 9 - A D L 5 4 - - - - 0 0

## Order form

Please copy formular, complete and fax it back to ASSA ABLOY!



Customer-No.:

---

Address:

---

 Company

---

 Branch

---

 Contact

---

 Telephone

---

 Fax

---

 Email

---

 Street / POB

---

 Postal Code / Town

ASSA ABLOY  
 Sicherheitstechnik GmbH  
 Bildstockstrasse 20  
 72458 Albstadt  
 GERMANY  
 Tel. +49 7431 123-700  
 Fax +49 7431 123-258  
[export.effeff@assaabloy.com](mailto:export.effeff@assaabloy.com)

Order Date:

---

Order Number	Pce.

Just fax to us on:

**+49 7431 123-171** (Germany)

**+49 7431 123-258** (worldwide)

Urgent orders can also  
be placed via email:

As an established partner for electric strike systems, ASSA ABLOY Sicherheitstechnik is known for its fast, reliable delivery of orders.

We offer two ordering options: You can fax the completed form to us or send us your requirements by email to **[export.effeff@assaabloy.com](mailto:export.effeff@assaabloy.com)**

Quotations and deliveries are made in accordance with our conditions of delivery and payment.

The ASSA ABLOY Group is the global leader in access solutions. Every day we help people feel safe, secure and experience a more open world.

**ASSA ABLOY**  
Opening Solutions

ASSA ABLOY  
Sicherheitstechnik GmbH  
Bildstockstrasse 20  
72458 Albstadt  
GERMANY  
Tel. +49 7431 123-700  
Fax +49 7431 123 258  
[albstadt@assaabloy.com](mailto:albstadt@assaabloy.com)  
[www.assaabloyopeningsolutions.de](http://www.assaabloyopeningsolutions.de)